

Membangun Server IRC dengan BAHAMUT dan EPONA



Berdiskusi atau *chatting* tidak harus melalui *server* IRC umum di Internet. Apalagi jika ingin lebih terjaga privasi Anda atau perusahaan, memiliki server IRC sendiri akan lebih seru dan aman.

BAHAMUT adalah salah satu *Internet Relay Chat Daemon* (IRCd). BAHAMUT didesain untuk **DALnet** yang merupakan salah satu jaringan IRC yang sangat terkenal di dunia Internet. Sebenarnya banyak sekali jenis IRCd yang ada, tapi dalam pandangan penulis, BAHAMUT lebih mudah diinstalasi dan dikonfigurasi dari yang lain. Pada saat pembuatan tulisan ini, versi terakhir BAHAMUT adalah *bahamut-1.4.35-release.tar.gz*, tetapi yang penulis coba instalasi adalah *bahamut-1.4.32-release.tar.gz*.

Instalasi dan konfigurasi BAHAMUT

Sebelum memulai instalasi, saya asumsikan Anda mempunyai *account* di mesin Linux dengan *username* **belog**, punya akses root dan direktori kerja ada di */home/belog*.

Login ke mesin Linux:

```
belogpolos login: belog
```

```
password:
```

(Masukkan password yang benar lalu tekan enter).

Jika login ke Linux sukses, tampilan prompt Linux Anda (misalnya) seperti ini:

```
belog@belogpolos: ~$
```

Langkah-langkah instalasi BAHAMUT:

1. Download BAHAMUT

Jika belum mempunyai source code BAHAMUT, Anda dapat men-download dari *ftp://ftp.dal.net/pub/dalnet/server/bahamut/bahamut-1.4.32-release.tar.gz* atau *http://bahamut.dal.net/ircd-qa/bahamut-1.4.32-release.tar.gz*. Simpan di bawah direktori kerja Anda, misalnya */home/belog*.

2. Ekstrak File Tarball

```
$ tar -zxvf bahamut-1.4.32-release.tar.gz
```

Setelah proses ekstraksi selesai, akan membentuk direktori baru dengan nama *bahamut-1.4.32-release*.

3. Konfigurasi BAHAMUT

```
$ mkdir bahamut
```

```
$ cd bahamut-1.4.32-release
```

```
$ ./configure
```

```
$ ./config
```

```
Welcome to Config for DALnet IRCd,
Version: bahamut(1)-4.30(00).
```

```
What are the maximum File Descriptors that
the IRCd can use?
```

```
[1024] -> 1024
```

```
What are the maximum number of Users you
intend to allow on your IRC server?
```

```
Note that you can now change this number
on the fly with with /set command.
```

```
[1000] -> 1000
```

```
What is the maximum connection buffer
amount?
```

```
Note, this CANNOT exceed the number of file
descriptors
```

```
minus the maximum clients.
```

```
[24] -> 24
```

```
What directory are all the server
configuration files in?
```

```
Note, this directory name needs to end with
a /
```

```
[/home/belog/bahamut-1.4.32-release/] -> /
home/belog/bahamut/
```

```
What is the explicit path to where the ircd
binary will be
```

```
installed? This should point to a file, not a
directory.
```

```
[/home/belog/bahamut-1.4.32-release/src/
ircd] -> /home/belog/bahamut/ircd
```

```
Would you like to see when a /stats is
requested?
```

```
This only applies for +y users.
```

```
[Yes] -> Yes
```

```
There are clients out there ignoring the
MOTD numeric, so
there is no point forcing MOTD on connecting
clients. Instead of
sending the MOTD, enabling this will just
send a short notice to the
connecting client asking them to read the
motd.
```

```
To change the notice, you may edit
ircd.smotd in the same directory
as your ircd.motd file.
```

```
[Yes] -> Yes
```

```
Would you like Connecting Clients to be
automatically set +i?
```

```
[Yes] -> Yes
```

```
Would you like to compile as a HUB?
```

```
[No] -> Yes
```

```
Would you like connecting users to be sent a
notice regarding
```

```
wingate and socks scans? This must be
defined if you
```

```
intend to run your server on DALnet.
```

```
[Yes] -> Yes
```

```
What host does your wingate bot run from?
```

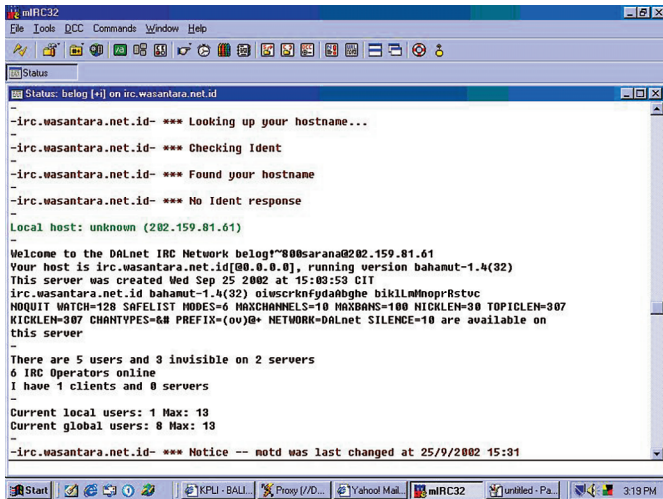
```
This is only a default and may be overridden
with a T: line
```

```
See doc/example.conf for more information
on T: lines
```

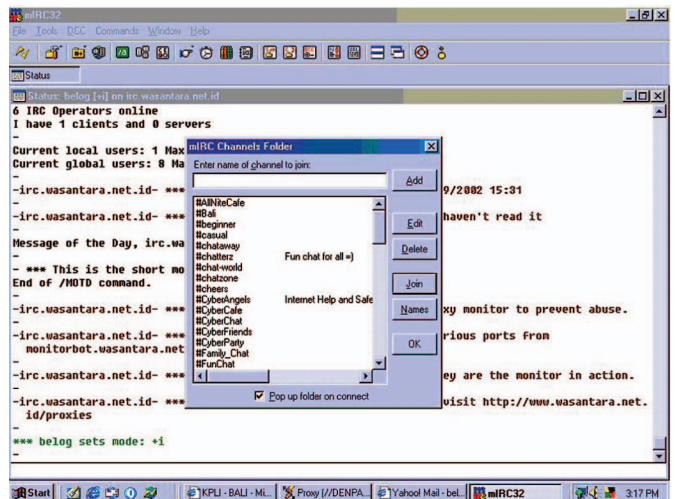
```
[some.bot.host] -> belogpolos.net
```

```
What address can users affected by k-lines
```

Tutorial BAHAMUT & EPONA



▲ Gambar 1. MIRC mengakses BAHAMUT



▲ Gambar 2. Channel IRC BAHAMUT

ask for help?

This is displayed to all LOCALLY k-lined users upon connect.

This should be the address of the local administrator.

This should NOT be kline@dal.net!

[admin@poorly.configured.server.com] -> admin@belogpolos.net

What address can users affected by autokills ask for help?

This is displayed to all globally autokilled users upon connect.

This should be the address of the network administrator.

On dalnet, this should be kline@dal.net.

[admin@poorly.configured.server.com] -> kline@belogpolos.net

Would you like to use syslog for server logging?

This is **STRONGLY** recommended, many errors can be caught by syslog.

[Yes] -> no

What sendq length do you wish to have?

[5050000] ->

What size of a bufferpool do you wish to have?

A bufferpool is a total of ALL sendq's in use [(4 * MAXSENDQLENGTH)] ->

Do you want your server to hide U:lined servers in a /links?

If you are planning to link to DALnet, this

MUST be defined.

[Yes] ->

Do you want to use the poll system call?

If you are on a solaris machine, this is mandatory.

Linux machines should use select until poll() is ironed out.

Poll works nicely on freebsd machines.

Select is more economical for small networks.

[Yes] ->

If you have network services and would like to make use of the built in secure services aliasing features, type in the name of your network services server here.

If you are a DALnet admin, you would type in "services.dal.net" below.

[services.dal.net] -> services.localhost.net

What is the maximum number of channels a user should be able to join?

[10] -> 25

Would you like to encrypt oper passwords in O:lines?

[No] ->

Thats all folks..

Writing include/options.h...Done.

Now your include/options.h is configured.

Please look over

include/config.h for more server specific options.

To compile your server, type 'make'.

4. Kompilasi Bahamut

\$ make

5. Edit File Konfigurasi (misal dengan editor teks pico)

\$ cd bahamut

\$ pico ircd.conf

Sesuaikan nomor port (misalnya 6667), alamat e-mail dan informasi *network* lainnya sesuai dengan kondisi di jaringan Anda.

6. Jalankan Server IRC

\$./ircd

Importing prime...

Prime imported.

Generating random state...

No random state found, trying to generate entropy from /dev/random...

Got 64 of 512 bits of entropy..

Got 128 of 512 bits of entropy..

Got 192 of 512 bits of entropy..

Got 256 of 512 bits of entropy..

Got 320 of 512 bits of entropy..

Got 384 of 512 bits of entropy..

Got 448 of 512 bits of entropy..

Got 512 of 512 bits of entropy..

Random state successful.

Value of FD_SETSIZE is 1024

Value of NOFILE is 256

Ircd is now becoming a daemon.

Tes dengan menggunakan program IRC di Linux (misalnya xchat) atau di Windows (misalnya mIRC) seperti tampak dalam Gambar 1 dan 2.

Agar server IRC (ircd) jalan secara otomatis pada saat komputer di reboot, tambahkan satu baris berikut ini pada file rc.local (di bawah direktori /etc atau /etc/rc.d).

```
/home/belog/bahamut/ircd/ircd -u belog
```

Membuat IRC Service dengan EPONA

EPONA adalah sebuah *IRC Services* yang merupakan pasangan dari BAHAMUT. Dengan EPONA kita dapat membuat sistem layanan, seperti NickServ, ChanServ, MemoServ, BotServ, dan OperServ. EPONA dirancang sangat stabil, efisien dan *user friendly*. Di samping dengan BAHAMUT, EPONA juga kompatibel dengan IRCd DreamForge, Unreal, dan Ultimate.

Langkah langkah instalasi EPONA (dalam hal ini *epona-1.4.10.tar.gz*) adalah sebagai berikut (asumsi: direktori kerja di /home/belog).

1. Download Epona di www.epona.org

2. Ekstrak file tarball source code Epona

```
$ tar -xzf epona-1.4.10.tar.gz
```

3. Konfigurasi EPONA

Sebelumnya kita buat dulu direktori services.

```
$ mkdir services
```

Masuk ke direktori epona-1.4.10, dan jalankan *script configure*, lalu jawab pertanyaan seperti contoh di bawah ini.

```
$ cd epona-1.4.10
```

```
$ ./configure
```

```
Where do you want the data file to be installed? [/home/belog/services] [enter]
```

```
Which group should all Services data files be owned by? (If Services should not force files to be owned by a particular group, just press Return.) [enter]
```

```
What should the default umask for data files be (in octal)?
```

```
(077 = only accessible by owner; 007 = accessible by owner and group)
```

```
[077] [enter]
```

```
Which of the following is closest to the type of server on your IRC network?
```

```
1) DreamForge 4.6.7 [this is an old IRCd, you should upgrade to Bahamut]
```

```
2) Bahamut 1.4.27 or later
```

```
3) UnrealIRCd 3.1.1 or later
```

```
4) UltimateIRCd 2.8.2 or later
```

```
5) Sequana 0.2.0 or later
```

```
[no default] 2
```

Selanjutnya tinggal tekan [enter] saja, dan tunggu hingga proses konfigurasi selesai.

4. Kompilasi EPONA

```
$ make
```

→ Tunggu sampai proses selesai, jika tidak ada pesan error berarti sukses.

```
$ make install
```

→ Tunggu sampai proses kompilasi selesai.

5. Edit File

```
services.conf
```

Karena kita menginstalasi services di direktori /home/belog/services, maka semua file akan tersimpan di sana. Masuk direktori /home/belog/services:

```
$ cd /home/belog/services
```

Copy file *example.conf* menjadi *services.conf*

```
$ cp example.conf services.conf
```

Edit file services.conf sesuaikan dengan kebutuhan Anda, misalnya seperti contoh ini (dengan editor teks pico):

```
$ pico services.conf
```

```
RemoteServer localhost 6667
```

```
mypass
```

```
ServerName services.localhost.net
```

```
ServerDest nama server anda
```

6. Edit File ircd.conf

Tambahkan beberapa baris seperti di

bawah ini.

```
Y:27:180:0:0:4000000
```

```
C:127.0.0.1:mypass:Services.LocalHost.Net::30
```

```
N:127.0.0.1:mypass:Services.LocalHost.Net::30
```

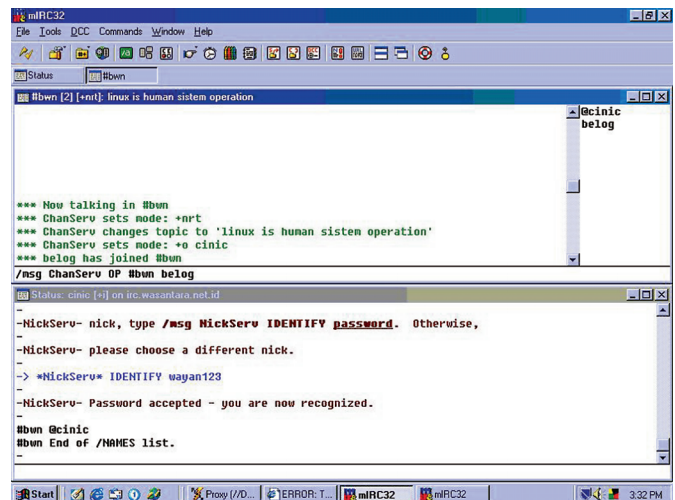
```
U:Services.LocalHost.Net:.*
```

```
H:.*:Services.LocalHost.Net
```

7. Jalankan Services

```
$ ./services
```

Tes dengan menggunakan program IRC (misalnya mIRC) seperti tampak dalam Gambar 3.



▲ Gambar 3. MIRC Mengakses Epona

Agar services ini jalan secara otomatis pada saat komputer di reboot, tambahkan satu baris berikut ini pada file rc.local (di bawah direktori /etc atau /etc/rc.d).

```
/home/belog/services/services -u belog
```

IRC Client di Linux

Gambar-gambar contoh ini menggunakan mIRC (IRC client di Windows). Anda ingin mencoba IRC client di Linux? Daftar berikut hanya sebagian dari banyak paket yang tersedia di Linux:

- Xchat (tersedia di hampir semua distro, atau www.xchat.org)
- Kslrc (tersedia bersama paket kdenetwork, lihat www.kde.org)
- Mozilla-irc (tersedia di CD distro, atau www.mozilla.org)
- BitchX (www.bitchx.org)
- Kvirc (www.kvirc.net)

I Wayan Sudana (belogp@yahoo.com)